

WILLKOMMEN! BIENVENUE! WELCOME!

to the world of

MagicWorkbooks®

Hotel Benchmarker

This is a **Magic**Workbook: a controlling tool in the form of a Microsoft Excel file.

No macros, no write protection. All formulas used are visible.

All formats used are standard Excel which transform into your country's Excel formats.

You can import your DATA from any source that supports MS Excel.

You can also add your own worksheets as you see fit.

© 2013 K! Business Solutions GmbH

www.MagicWorkbooks.com

System requirements

Platform: Windows 98 or later operating system
Microsoft Excel Version: 2007 or later
(You need a xls format (excel 2003) – send us a short information after you placed the order – support@magicworkbooks.com - we'll send you the ordered xls MagicWorkbook by email)

Product Survey

HotelBenchmarker the fast and easy way to check hotel performance - rate, occupancy and revpar - against competitors.

HotelBenchmarker analyses these figures in two ways:

1. comparison with the average of up to five hotels of your choice (= my compset)
2. comparison with one specific hotel
3. comparison with an area benchmark such as the STR Global hotelbenchmarking

The following analyses are automatically generated from your data input:

- Comparison to previous year
- Comparisons to STR Global benchmarking
- Comparisons to your competitors

month to date and year to

**HotelBenchmarker - to know
how your hotel checks out!**

Sheet	Type	contains	click book to get to page
WELCOME	Text	Introduction / Instructions	
DATA	Spreadsheet	DATA INPUT	
ACT	graph	The Way It is	
RatesOneM	graph	Comparison with one hotel Average Room Rate	
RatesOneY	graph	Comparison with one hotel Average Room Rate cumulative	
OccOneM	graph	Comparison with one hotel Occupancy	
OccOneY	graph	Comparison with one hotel Occupancy cumulative	
RevParOneM	graph	Comparison with one hotel RevPar	
RevParOneY	graph	Comparison with one hotel Revpar cumulative	
RatesM	graph	Benchmarking Room Rates	
RatesY	graph	Benchmarking Room Rates	
OccM	graph	Benchmarking Occupancy	
OccY	graph	Benchmarking Occupancy	
RevParM	graph	Benchmarking RevPar	
RevParY	graph	Benchmarking RevPar	
LYrates	graph	Benchmarking Room Rates to Last Year	
LYocc	graph	Benchmarking Occupancy to Last Year	
LYrevpar	graph	Benchmarking RevPar zu Vorjahr	

HotelBenchmarker

DATA INPUT

Input your general data in the yellow cells.

Do not delete rows or columns, do not add rows or columns, do not use drag&drop in the data input and do not overwrite formula cells as this may destroy the functionality of this tool.

Starting Date: 3

Actual Month: always enter the first of the month!

Hotel:

Reporting currency:

Choose the type of analysis you want: average of all competitors (my compset), area benchmark, or both.

Type of analysis 1 = my competitors only (My Compset)
 2 = my compset + area benchmark
 3 = area benchmark only

Now please input your data (Average Room Rate + Occupancy) for the actual and last year in the yellow cells below. Benchmark data go in the blue cells. Competitor data go in the orange cells. Please note that it's important not to change the number of competitors in the course of the year.

2015													2014											
RATE	Jan-15	Feb-15	Mar-15	Apr-15	May-15	Jun-15	Jul-15	Aug-15	Sep-15	Oct-15	Nov-15	Dec-15	Jan-14	Feb-14	Mar-14	Apr-14	May-14	Jun-14	Jul-14	Aug-14	Sep-14	Oct-14	Nov-14	Dec-14
Paradise Island	95.01	67.75	85.20	61.09	59.63	63.14							90.78	79.25	59.53	60.12	56.33	50.96	41.32	51.96	85.16	82.47	59.70	54.70
Area Benchmark	97.80	75.03	87.07	60.50	59.65	62.00							92.00	81.00	62.00	61.50	57.50	52.01	42.30	55.00	87.50	84.13	62.01	56.70
1 Hotel 1	78.55	67.68	73.52	59.76	58.90	57.75							68.37	72.46	58.96	64.59	60.10	59.02	51.16	53.31	72.00	68.72	57.43	55.84
2 Hotel 2	94.36	86.99	82.86	68.98	54.73	64.83							77.90	88.08	62.49	71.62	72.60	58.13	49.25	53.39	88.00	77.59	57.75	53.44
3 Hotel 3	92.74	82.63	88.53	65.03	49.05	63.35							79.72	78.35	65.28	80.55	69.35	55.00	52.20	53.53	78.00	82.09	64.53	64.37
4 Hotel 4	75.83	64.18	76.08	54.80	46.46	51.45							68.89	76.00	55.00	69.48	55.41	52.10	51.38	50.59	76.00	60.16	50.19	49.11
5 Hotel 5	88.33	77.99	81.89	68.02	50.72	70.13							83.41	80.70	60.60	72.95	60.72	54.78	49.26	50.34	81.00	77.09	58.86	59.62
My Compset	85.96	75.89	80.58	63.32	51.97	61.50	0.00	0.00	0.00	0.00	0.00	0.00	75.66	79.12	60.47	71.84	63.64	55.81	50.65	52.23	79.00	73.13	57.75	56.48
2015													2014											
OCC	Jan-15	Feb-15	Mar-15	Apr-15	May-15	Jun-15	Jul-15	Aug-15	Sep-15	Oct-15	Nov-15	Dec-15	Jan-14	Feb-14	Mar-14	Apr-14	May-14	Jun-14	Jul-14	Aug-14	Sep-14	Oct-14	Nov-14	Dec-14
Paradise Island	55%	60%	47%	62%	39%	56%							49%	60%	53%	52%	54%	44%	50%	45%	59%	47%	54%	50%
Area Benchmark	56%	59%	49%	63%	38%	58%							55%	62%	54%	49%	55%	42%	51%	47%	57%	47%	54%	50%
Hotel 1	60%	66%	52%	73%	53%	61%							56%	70%	69%	56%	61%	49%	52%	44%	70%	58%	57%	45%
Hotel 2	66%	64%	60%	81%	72%	72%							62%	72%	72%	68%	80%	67%	66%	61%	72%	83%	75%	68%
Hotel 3	59%	62%	50%	68%	50%	67%							45%	59%	50%	42%	40%	60%	45%	42%	59%	59%	59%	40%
Hotel 4	62%	64%	60%	74%	67%	78%							58%	66%	64%	60%	66%	66%	63%	60%	64%	69%	58%	58%
Hotel 5	55%	63%	53%	75%	57%	66%							54%	61%	68%	69%	72%	76%	64%	58%	68%	64%	65%	45%
My Compset	60%	64%	55%	74%	60%	69%	0%	0%	0%	0%	0%	0%	55%	66%	65%	59%	64%	63%	58%	53%	67%	66%	63%	51%

End of Data Input

The Way It is

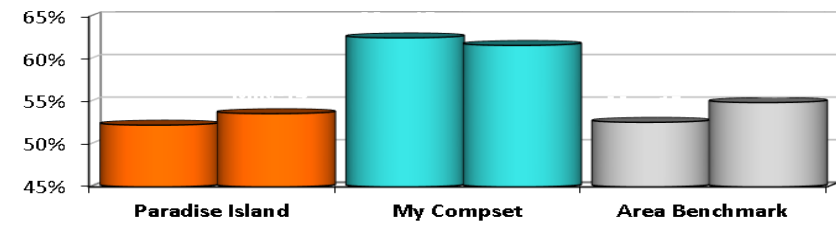
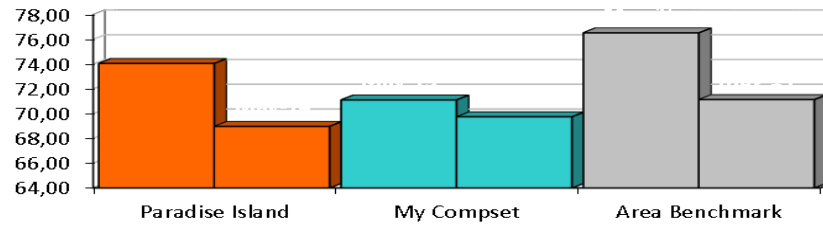
Reporting currency: *EUR*

Hotel:
Actual Month:

Paradise Island
May 2015

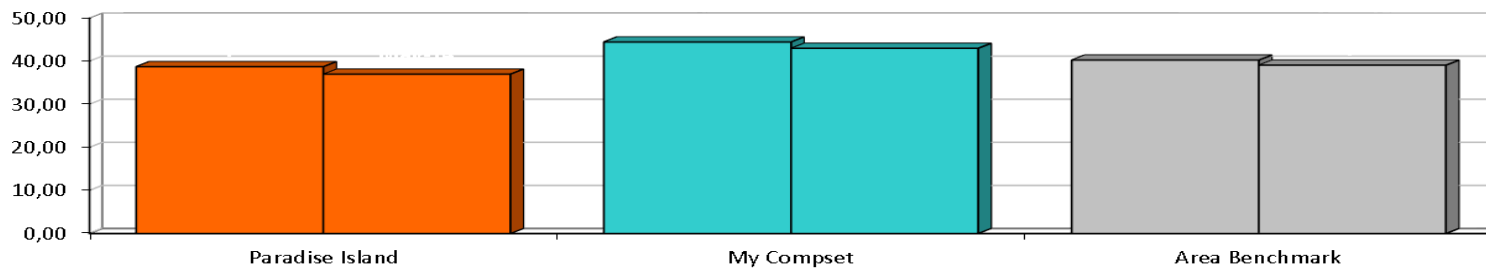
ARR cumulative	Paradise Island	My Compset	Area Benchmark	compared to:	compared to:
				My Compset	Area Benchmark
May-15	74.05	71.11	76.53	2.95	-2.48
May-14	68.98	69.74	71.13	-0.77	-2.16
Change	7%	2%	8%		

Occupancy cumulative	Paradise Island	My Compset	Area Benchmark	compared to:	compared to:
				My Compset	Area Benchmark
May-15	52.3%	62.5%	52.6%	-10%	0%
May-14	53.6%	61.6%	54.9%	-8%	-1%
Change	-3%	1%	-4%		



RevPar cumulative	Paradise Island	My Compset	Area Benchmark	compared to:	compared to:
				My Compset	Area Benchmark
May-15	38.70	44.44	40.24	-5.75	-1.55
May-14	36.97	42.97	39.05	-6.00	-2.08
Change	5%	3%	3%		

compared to:	compared to:
My Compset	Area Benchmark
-5.75	-1.55
-6.00	-2.08



HotelBenchmarker

Input the number of the competitor (1 - 5) that you would like to compare yourself to in the yellow cell.

Input "B" if you want a comparison to your area benchmark.

B Area Benchmark

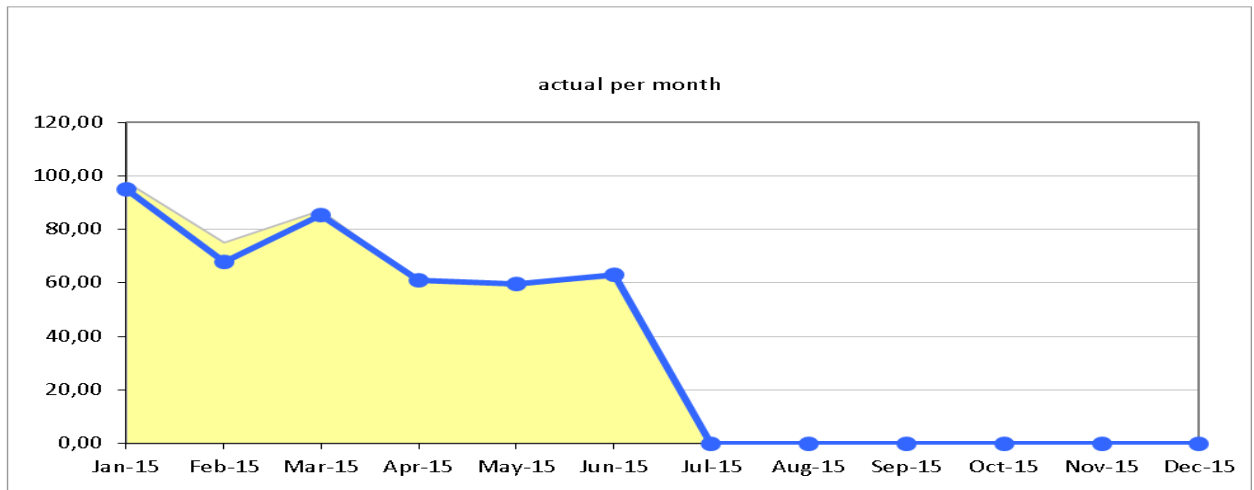
Comparison with one hotel Average Room Rate

Hotel: Paradise Island

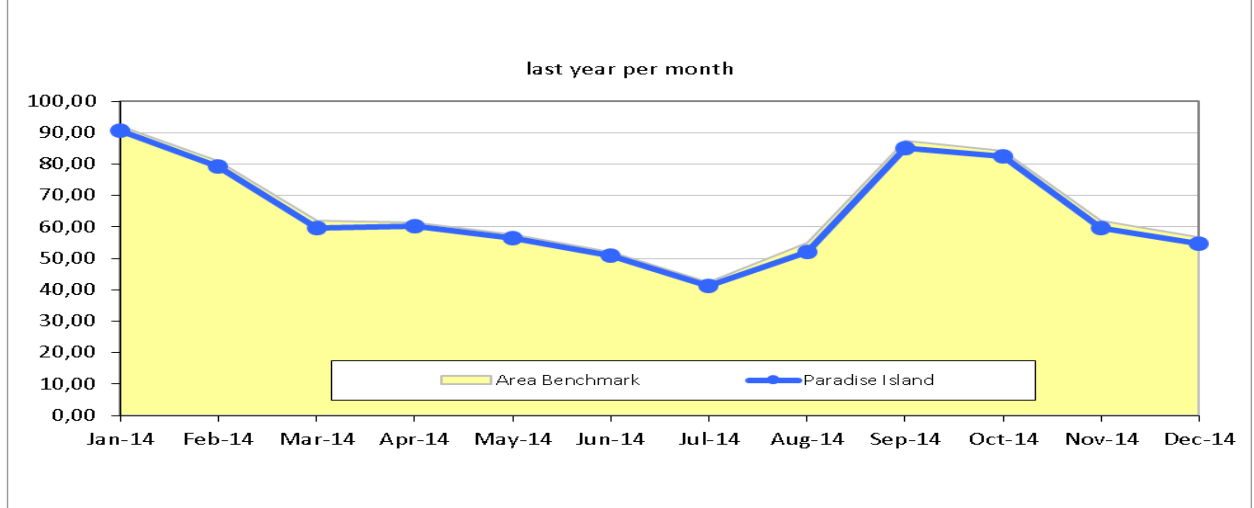
Reporting currency: EUR

Actual Month: May 2015

actual per month	Paradise Island	Area Benchmark	compared to: Area Benchmark	in %
Jan-15	95.01	97.80	-2.79	-3%
Feb-15	67.75	75.03	-7.28	-11%
Mar-15	85.20	87.07	-1.87	-2%
Apr-15	61.09	60.50	0.59	1%
May-15	59.63	59.65	-0.02	0%
Jun-15	63.14	62.00	1.14	2%
Jul-15				
Aug-15				
Sep-15				
Oct-15				
Nov-15				
Dec-15				



last year per month	Paradise Island	Area Benchmark	compared to: Area Benchmark	in %
Jan-14	90.78	92.00	-1.22	-1%
Feb-14	79.25	81.00	-1.75	-2%
Mar-14	59.53	62.00	-2.47	-4%
Apr-14	60.12	61.50	-1.38	-2%
May-14	56.33	57.50	-1.17	-2%
Jun-14	50.96	52.01	-1.05	-2%
Jul-14	41.32	42.30	-0.98	-2%
Aug-14	51.96	55.00	-3.04	-6%
Sep-14	85.16	87.50	-2.34	-3%
Oct-14	82.47	84.13	-1.66	-2%
Nov-14	59.70	62.01	-2.31	-4%
Dec-14	54.70	56.70	-2.00	-4%



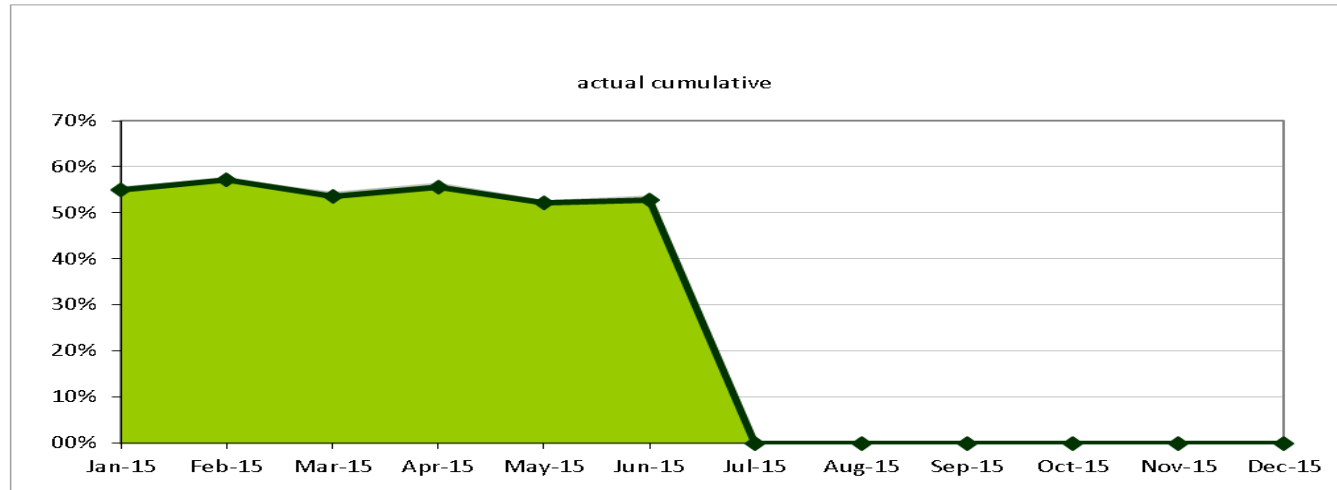
Want to change your benchmark-hotel? Data input in sheet "RatesOneM" Area Benchmark

Comparison with one hotel Occupancy cumulative

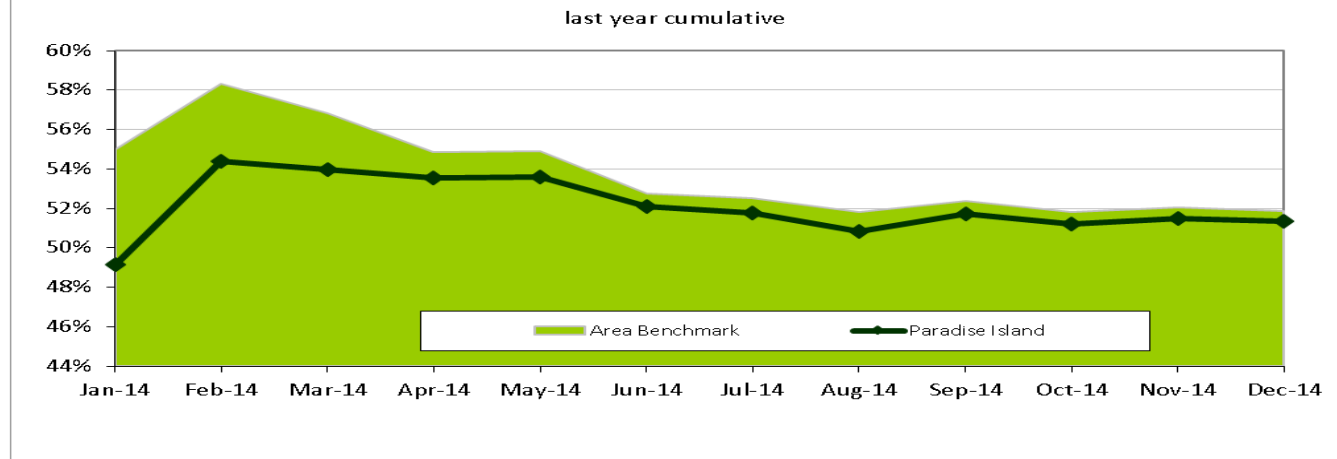
Hotel: Paradise Island
Actual Month: May 2015

Reporting currency: EUR

cumulative	compared to:		Area Benchmark
	Paradise Island	Area Benchmark	
Jan-15	55.0%	55.5%	-1%
Feb-15	57.2%	57.4%	0%
Mar-15	53.7%	54.3%	-1%
Apr-15	55.6%	56.4%	-1%
May-15	52.3%	52.6%	0%
Jun-15	52.8%	53.5%	-1%
Jul-15			
Aug-15			
Sep-15			
Oct-15			
Nov-15			
Dec-15			



last year cumulative	compared to:		Area Benchmark
	Paradise Island	Area Benchmark	
Jan-14	49.2%	55.0%	-6%
Feb-14	54.4%	58.3%	-4%
Mar-14	53.9%	56.8%	-3%
Apr-14	53.6%	54.9%	-1%
May-14	53.6%	54.9%	-1%
Jun-14	52.1%	52.8%	-1%
Jul-14	51.8%	52.5%	-1%
Aug-14	50.8%	51.8%	-1%
Sep-14	51.7%	52.4%	-1%
Oct-14	51.2%	51.8%	-1%
Nov-14	51.5%	52.0%	-1%
Dec-14	51.3%	51.8%	0%



Want to change your benchmark-hotel? Data input in sheet "RatesOneM"

Area Benchmark

Comparison with one hotel Revpar cumulative

Hotel:

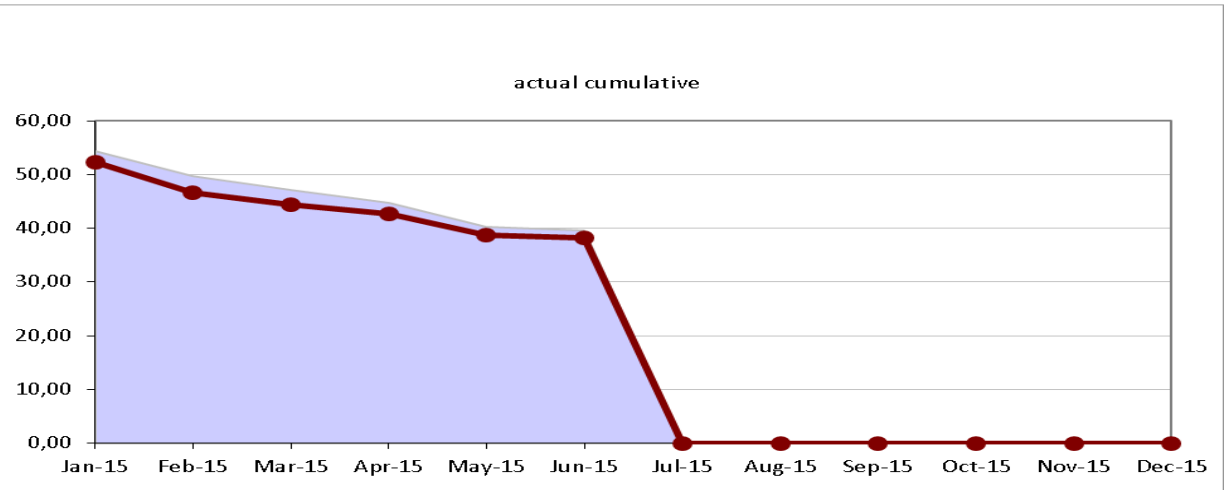
Paradise Island

Reporting currency: EUR

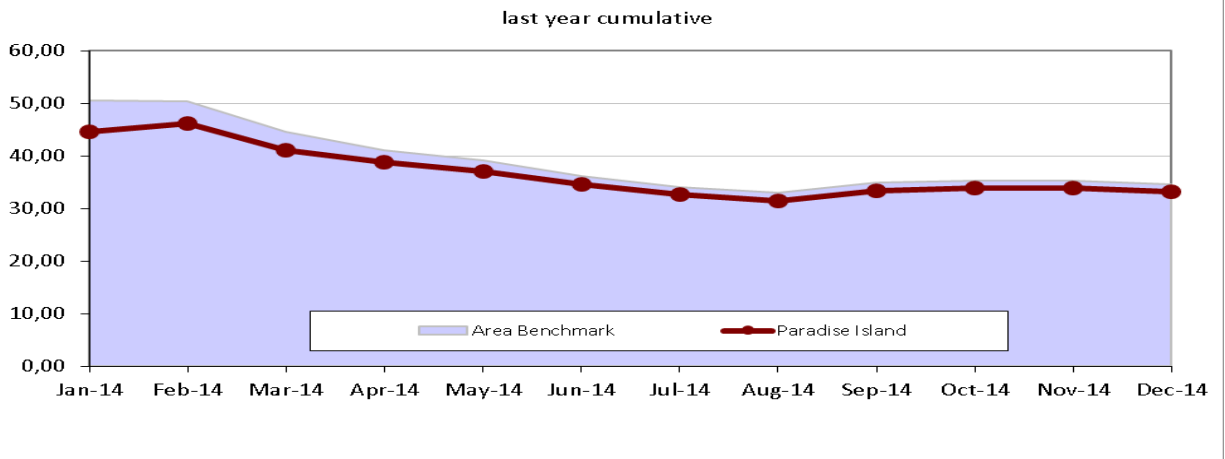
Actual Month:

May 2015

cumulative	Area Benchmark		compared to:	
	Paradise Island	Area Benchmark	Area Benchmark	in %
Jan-15	52.26	54.28	-2.02	-4%
Feb-15	46.61	49.67	-3.06	-7%
Mar-15	44.34	47.11	-2.76	-6%
Apr-15	42.66	44.78	-2.12	-5%
May-15	38.70	40.24	-1.55	-4%
Jun-15	38.11	39.56	-1.45	-4%
Jul-15				
Aug-15				
Sep-15				
Oct-15				
Nov-15				
Dec-15				



last year cumulative	Area Benchmark		compared to:	
	Paradise Island	Area Benchmark	Area Benchmark	in %
Jan-14	44.62	50.60	-5.98	-13%
Feb-14	46.08	50.42	-4.33	-9%
Mar-14	41.10	44.58	-3.49	-8%
Apr-14	38.70	40.97	-2.28	-6%
May-14	36.97	39.05	-2.08	-6%
Jun-14	34.60	36.20	-1.60	-5%
Jul-14	32.55	34.06	-1.51	-5%
Aug-14	31.35	33.01	-1.66	-5%
Sep-14	33.42	34.87	-1.45	-4%
Oct-14	33.94	35.34	-1.40	-4%
Nov-14	33.80	35.19	-1.39	-4%
Dec-14	33.24	34.59	-1.35	-4%



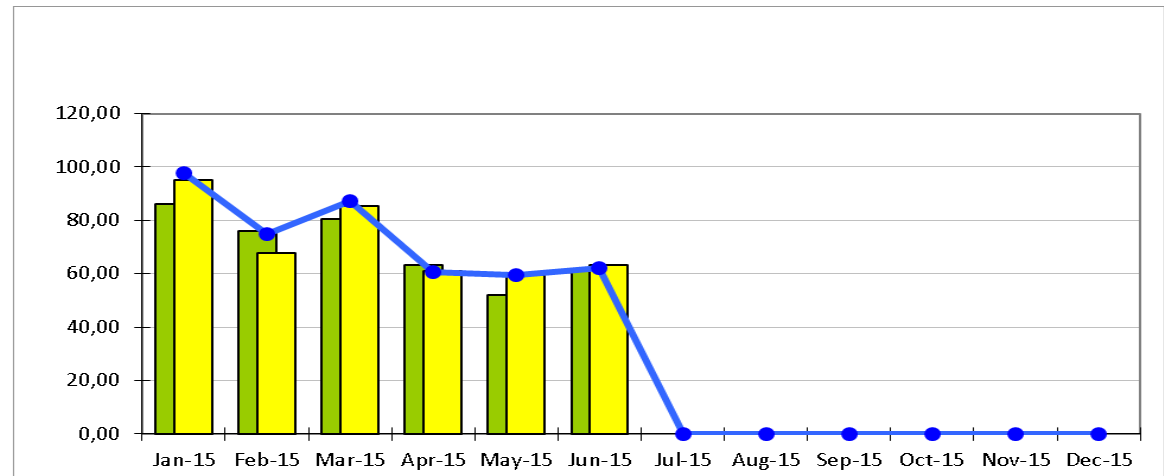
HotelBenchmarker

Benchmarking Room Rates *monthly*

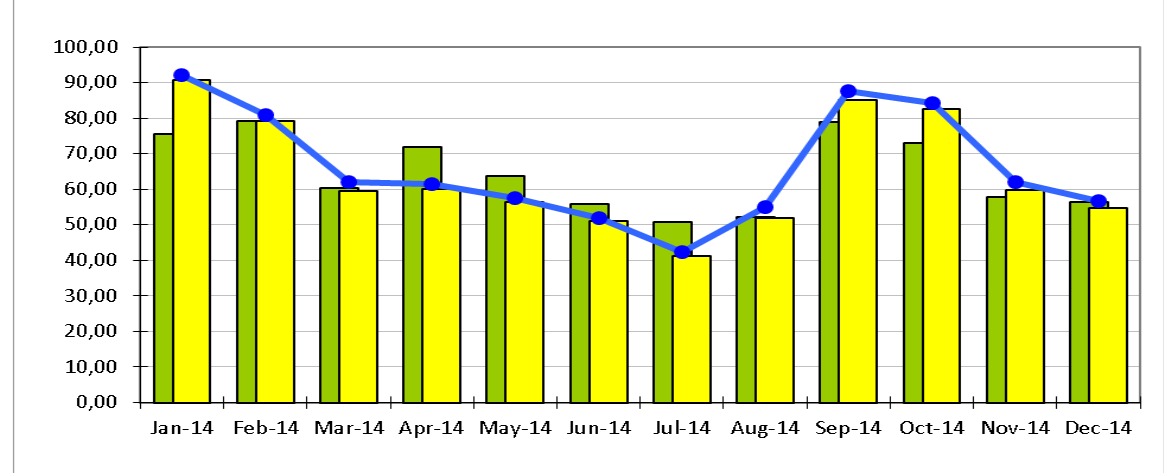
Reporting currency: EUR

Hotel: Paradise Island
Actual Month: May 2015

	Paradise Island	My Compset	Area Benchmark	compared to: My Compset	compared to: Area Benchmark
Jan-15	95.01	85.96	97.80	9.05	-2.79
Feb-15	67.75	75.89	75.03	-8.14	-7.28
Mar-15	85.20	80.58	87.07	4.62	-1.87
Apr-15	61.09	63.32	60.50	-2.23	0.59
May-15	59.63	51.97	59.65	7.66	-0.02
Jun-15	63.14	61.50	62.00	1.64	1.14
Jul-15					
Aug-15					
Sep-15					
Oct-15					
Nov-15					
Dec-15					



Jan-14	90.78	75.66	92.00	15.12	-1.22
Feb-14	79.25	79.12	81.00	0.13	-1.75
Mar-14	59.53	60.47	62.00	-0.94	-2.47
Apr-14	60.12	71.84	61.50	-11.72	-1.38
May-14	56.33	63.64	57.50	-7.31	-1.17
Jun-14	50.96	55.81	52.01	-4.85	-1.05
Jul-14	41.32	50.65	42.30	-9.33	-0.98
Aug-14	51.96	52.23	55.00	-0.27	-3.04
Sep-14	85.16	79.00	87.50	6.16	-2.34
Oct-14	82.47	73.13	84.13	9.34	-1.66
Nov-14	59.70	57.75	62.01	1.95	-2.31
Dec-14	54.70	56.48	56.70	-1.78	-2.00



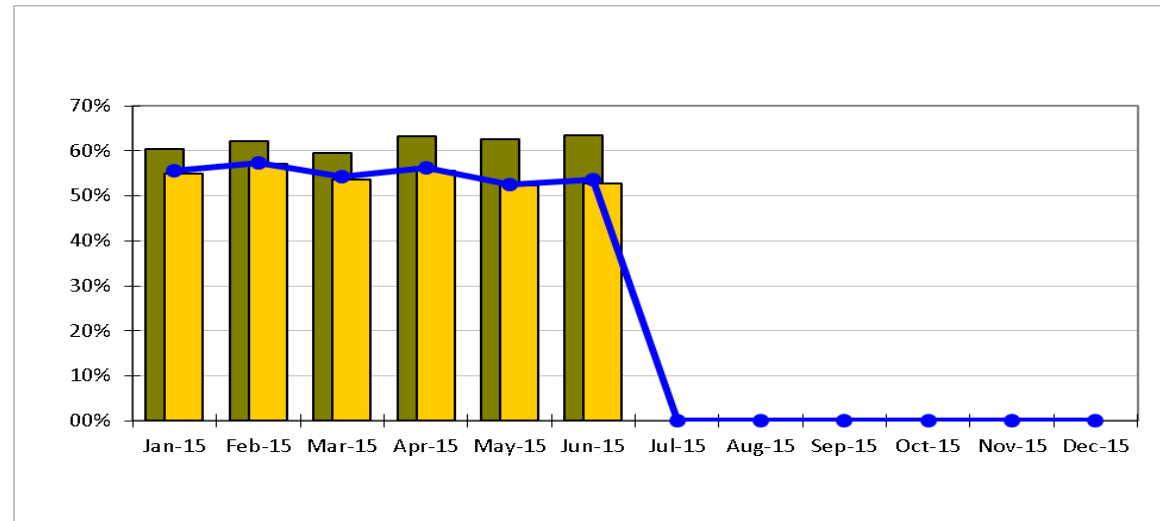
Benchmarking Occupancy

cumulative

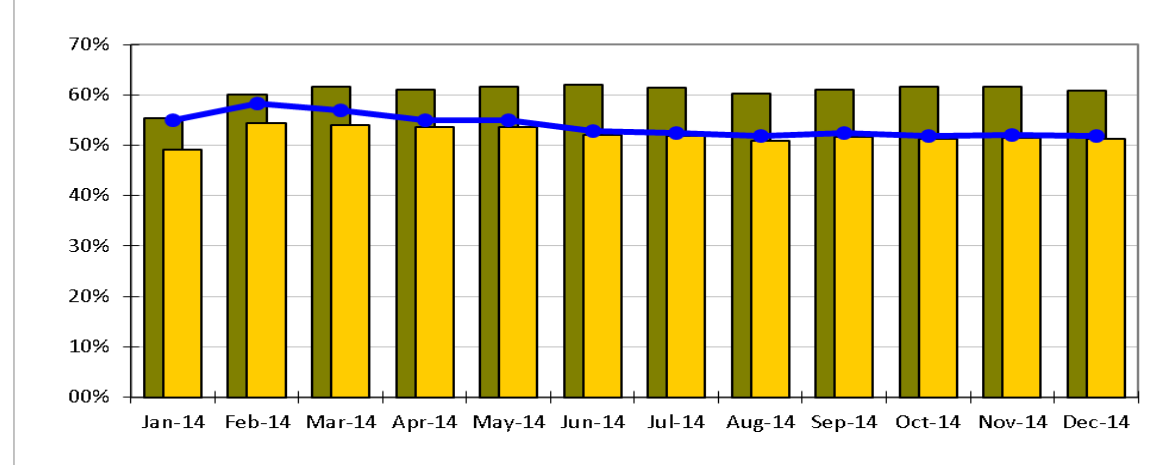
Hotel:
Actual Month:

Paradise Island
May 2015

	Paradise Island	My Compset	Area Benchmark	compared to: My Compset	compared to: Area Benchmark
Jan-15	55.0%	60.5%	55.5%	-5%	-1%
Feb-15	57.2%	62.1%	57.4%	-5%	0%
Mar-15	53.7%	59.6%	54.3%	-6%	-1%
Apr-15	55.6%	63.2%	56.4%	-8%	-1%
May-15	52.3%	62.5%	52.6%	-10%	0%
Jun-15	52.8%	63.5%	53.5%	-11%	-1%
Jul-15					
Aug-15					
Sep-15					
Oct-15					
Nov-15					
Dec-15					



Jan-14	49.2%	55.3%	55.0%	-6%	-6%
Feb-14	54.4%	60.1%	58.3%	-6%	-4%
Mar-14	53.9%	61.7%	56.8%	-8%	-3%
Apr-14	53.6%	61.1%	54.9%	-8%	-1%
May-14	53.6%	61.6%	54.9%	-8%	-1%
Jun-14	52.1%	61.9%	52.8%	-10%	-1%
Jul-14	51.8%	61.3%	52.5%	-10%	-1%
Aug-14	50.8%	60.3%	51.8%	-9%	-1%
Sep-14	51.7%	61.0%	52.4%	-9%	-1%
Oct-14	51.2%	61.5%	51.8%	-10%	-1%
Nov-14	51.5%	61.6%	52.0%	-10%	-1%
Dec-14	51.3%	60.8%	51.8%	-9%	0%



HotelBenchmarker

Benchmarking RevPar

monthly

Reporting currency: EUR

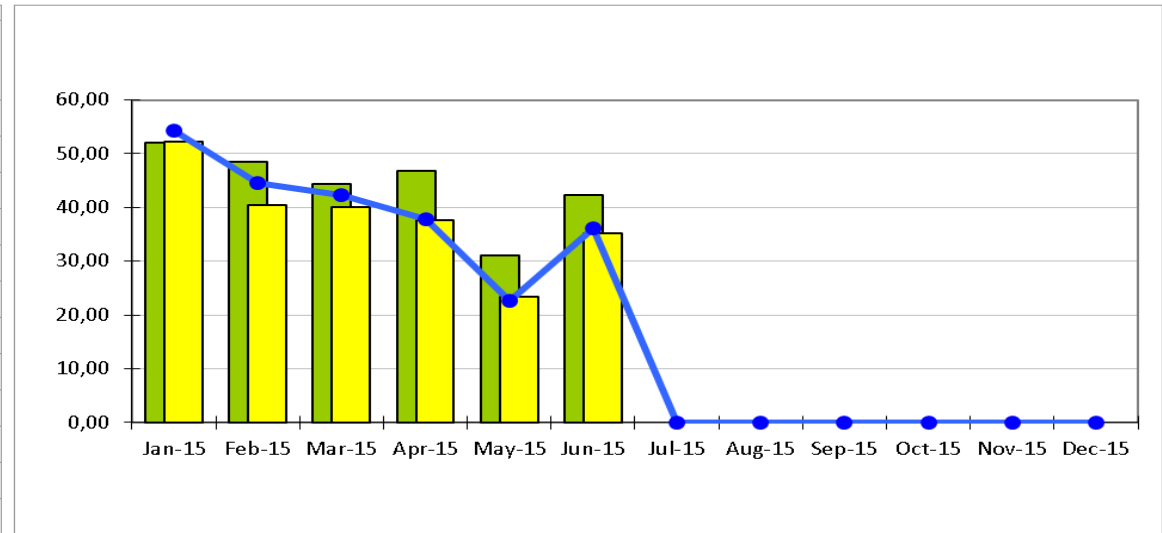
Hotel:

Paradise Island

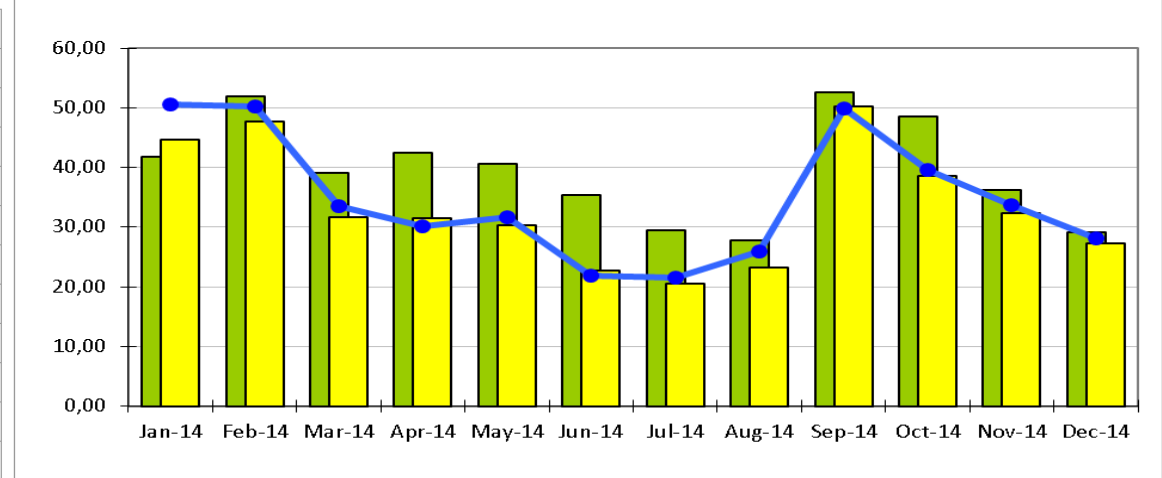
Actual Month:

May 2015

	Paradise Island	My Compset	Area Benchmark	compared to: My Compset	compared to: Area Benchmark
Jan-15	52.26	52.00	54.28	0.25	-2.02
Feb-15	40.35	48.40	44.57	-8.05	-4.22
Mar-15	40.04	44.31	42.23	-4.28	-2.19
Apr-15	37.61	46.88	37.81	-9.27	-0.20
May-15	23.35	31.02	22.67	-7.67	0.68
Jun-15	35.19	42.27	36.15	-7.08	-0.96
Jul-15					
Aug-15					
Sep-15					
Oct-15					
Nov-15					
Dec-15					



Jan-14	44.62	41.82	50.60	2.80	-5.98
Feb-14	47.71	51.85	50.22	-4.14	-2.51
Mar-14	31.60	39.09	33.48	-7.49	-1.88
Apr-14	31.49	42.49	30.14	-11.00	1.36
May-14	30.29	40.58	31.63	-10.28	-1.33
Jun-14	22.66	35.37	21.84	-12.71	0.81
Jul-14	20.59	29.37	21.57	-8.78	-0.99
Aug-14	23.17	27.70	25.85	-4.53	-2.68
Sep-14	50.16	52.61	49.88	-2.45	0.28
Oct-14	38.57	48.60	39.54	-10.03	-0.97
Nov-14	32.33	36.27	33.61	-3.95	-1.28
Dec-14	27.24	29.04	28.18	-1.80	-0.94

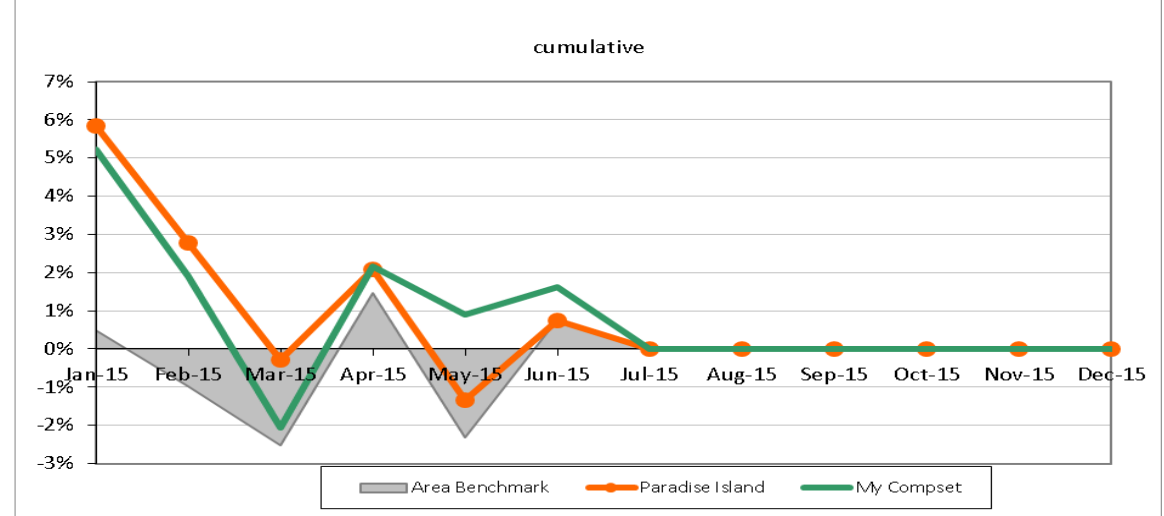
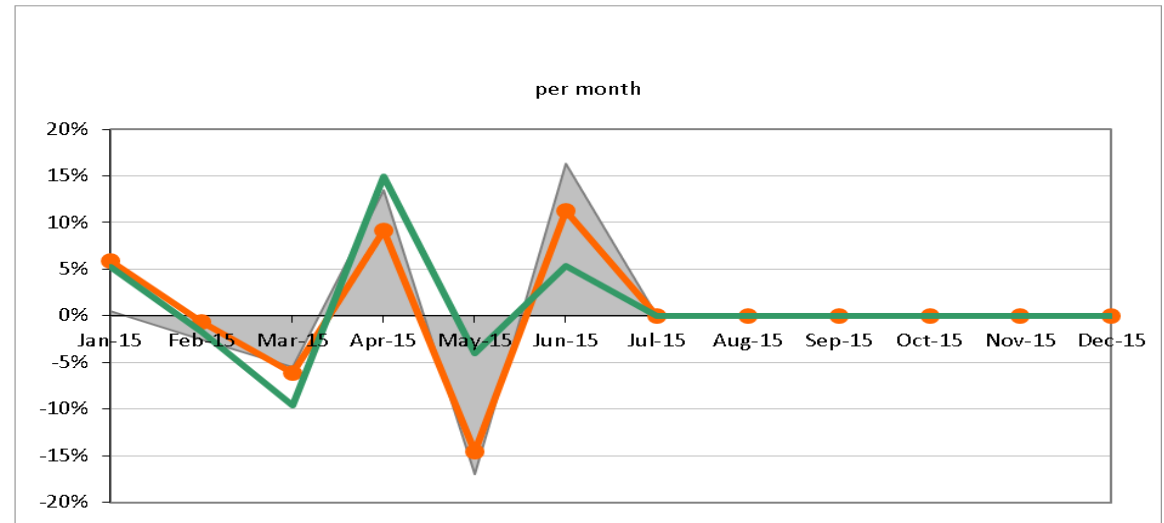


Benchmarking Occupancy to Last Year

Hotel: Paradise Island
Actual Month: May 2015

per month				compared to:	compared to:
	Paradise Island	My Compset	Benchmark	My Compset	Area Benchmark
Jan-15	6%	5%	1%	1%	5%
Feb-15	-1%	-2%	-3%	1%	2%
Mar-15	-6%	-10%	-6%	4%	-1%
Apr-15	9%	15%	14%	-6%	-4%
May-15	-15%	-4%	-17%	-11%	2%
Jun-15	11%	5%	16%	6%	-5%
Jul-15					
Aug-15					
Sep-15					
Oct-15					
Nov-15					
Dec-15					

cumulative				compared to:	compared to:
	Paradise Island	My Compset	Benchmark	My Compset	Area Benchmark
Jan-15	6%	5%	1%	1%	5%
Feb-15	3%	2%	-1%	1%	4%
Mar-15	0%	-2%	-3%	2%	2%
Apr-15	2%	2%	1%	0%	1%
May-15	-1%	1%	-2%	-2%	1%
Jun-15	1%	2%	1%	-1%	0%
Jul-15					
Aug-15					
Sep-15					
Oct-15					
Nov-15					
Dec-15					



In what way do **MagicWorkbooks**[®] differ from normal Excel workbooks?

MagicWorkbooks are easier to use:

- Easy-to-handle data input with demo data for orientation
- All data to be entered only once
- No programming knowledge required
- No detailed knowledge of Microsoft Excel required
- No work on spreadsheets or charts required
- No scrolling for sheets thanks to a Hyperlink-table of contents

MagicWorkbooks are faster:

- A monthly report with 20 spreadsheets and 20 charts in 20 minutes?
- Calculate year-end liquid reserves with changes in revenue prediction for every month in half an hour?
- Compute balance sheets for the next five years in one hour?
- Decision on a \$ 50 million sale-and-lease-back operation: Prepare all relevant data in one hour?
- Determine capital re-investment requirements (fixed assets) for the next year in 10 minutes?
- Prepare a comprehensive company presentation for your bank in one hour?

With **MagicWorkbooks** all that is „business as usual“!

This was just a brief survey ...

if you have further questions regarding this workbook, email us!

You are interested in other products:

www.MagicWorkbooks.com